

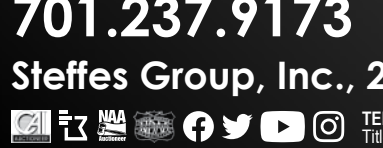
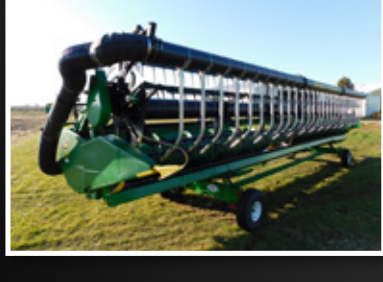
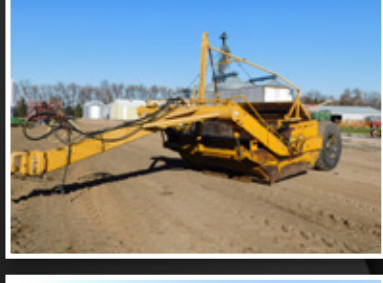
ESTATE FARM 7725 170th Ave SE, Mooreton, ND 58061. From Mooreton, ND 1 mile North on Co Rd 1, 1 mile East on 78th St SE, 3/4 mile North on 170th Ave SE.

# AUCTION

TIMED ONLINE

**OPENS: FRIDAY, DECEMBER 10**  
**CLOSES: MONDAY, DECEMBER 20 | 12PM**

PREVIEW: Friday, December 10 – Monday, December 20 from 8AM-5PM  
 LOADOUT: By appointment with Brandon, 701.640.8204. All items to be removed within two weeks of auction closing.  
 No loadout on December 24-26.



## ALLEN WARD ESTATE

### TRACTORS

**2011 Case-IH 485HD**, 4WD, premium cab, leather, powershift, 5 hyd., return flow, front & rear diff lock, integrated auto steer, Pro 600 display, 262 receiver, front tow cable, front & rear wheel weights, 710/70R42 duals, 2,731 hrs., S/NZAF122072

**2004 New Holland TC33DA utility**, MFWD, 33 hp. 3 cyl. diesel, HST, folding ROPS, 1 hyd., 3 pt., quick hitch, 540 PTO, diff lock, front weights, 72" mid-mount mower deck, 25x8-50 front tires, 15x19.5 rear tires, 1,184 hrs., S/NG100180

### SPRAYER

**2014 John Deere R4038 self-propelled sprayer**, premium cab, leather, buddy seat, 120' booms, 5-sensor BoomTrac Pro, 1,000 gal. SS tank, 5-way nozzles, 11-section boom, hyd. tread adj. fenders, traction control, 3" front & side fill, integrated auto steer, 2630 display in armrest, SF2, Section Control, SS chemical inductor, 420/80R46 tires, 614 spray hrs., 1,580 engine hrs., S/N1N04038RPE0001939

### GPS EQUIPMENT

**2016 John Deere 2630 display**, SF2, 1,277 hrs., S/NPCGU2UG582102  
**2018 John Deere SF6000 receiver**, SF1, 319 hrs., S/NPCS161B401243

### FLEX HEAD

**2010 John Deere 630F flex head**, 30', low dam, hyd. fore/aft, finger reel, AHH, CWS air bar, single pt. hookup, trailer not included, S/N1H00630FTA0736372

### GRAIN CART

**Unverferth 8250 grain cart**, 825 bu., 16" corner auger, 1000 PTO, 30.5L-32 tires, S/NB22190137

### PLANTER

**John Deere 7100 planter**, 8x30", 3 pt., 1.6 bu. boxes w/ext., hyd. markers, spring down pressure, ground drive, bean meters, S/N037938A

### TILLAGE & ROW CROP EQUIPMENT

**2021 Wil-Rich QX2 field cultivator**, 60', 7" space, 5-section fold, full floating hitch, double springs in wheel tracks, single pt. depth, 9" sweeps, walking tandems across, hyd. adj. rolling baskets, 3-bar harrow, 380/55R16.5 tires on main frame, single owner, New w/approx. 500 acres, S/NAGCWFCFHOMX465302

**2012 Wil-Rich QX2 field cultivator**, 40', 7" space, 3-section fold, 9" sweeps, full floating hitch, edge-on shanks, factory rear hitch & hyd., 4-bar harrow, flotation tire pkg., S/N459189

**2018 Wil-Rich 483 Chisel Pro disc ripper**, 23'9", 15" shank space, rock flex front ripple blades, full floating hitch, single pt. depth, walking tandems on main, hyd. adj. rolling baskets, 3-bar HD harrow w/26" tines, 12R22.5 truck tires, S/NAGCW48300JX464475

**2009 Salford RTS570 vertical tillage**, 30', 3-section fold, 17" 8-wave blades, weight pkg., walking tandems across, rolling baskets, 3-bar harrow, S/N91516

**2002 Flexi-Coil 75 pull-type coil packer**, 40', 3-section fold, tandems on main, spring cushion gangs, ext. hitch, S/NS75-115020-02  
**2011 McFarlane WDL-2060-16" spike tooth harrow**, 60', 16-bar sections, walking tandems on main, auto fold, S/N15554

**Flexi-Coil 340 chisel plow**, 30', 12" space, 3-section fold, 3" spikes, walking tandems across, single pt. depth, 3-bar harrow, S/NC340A00T080202

**John Deere 650 tandem disc**, 32', 9" space, 3-section fold, 24-1/2" blades, tandems across, single pt. depth, hyd. fore/aft, wing gauge wheels, S/NN00650X001870

### SKID STEER LOADER & ATTACHMENTS

**2014 Bobcat S590 skid steer loader**, CAH, 2 spd., power Bobtach, hand & foot controls, 68" bucket w/bolt-on cutting edge, 10-16.5 tires, 514 hrs., S/NAR9R012579

**2014 Bobcat SB200 skid steer snowblower**, hyd. spout & tip adj., 72", 7-pin connector, std. flow, bolt-on cutting edge, universal skid steer mounts, S/N712909293

### BEAN & ROW CROP EQUIPMENT

**UFTH-IGW bean knifer**, 8-row, front-mount, S/N1681  
**Wil-Rich row crop cultivator**, 12x30", hyd. flat fold, 3 pt., edge-on shanks, 3-shanks per row, S/N450236

### SEMI TRACTORS

**2005 Volvo VNL64T tandem axle day cab**, Cummins ISX, Eaton 10 spd., air susp., engine brake, diff lock, cruise, single aluminum fuel tank, 182" WB, 11R22.5 tires on aluminum rims, 629,752 miles

**1985 White tandem axle day cab**, Cummins L10, 350 hp., Eaton 9 spd., spring susp., diff lock, dual aluminum fuel tanks, 165" WB, 295/75R22.5 tires on steel rims, shows 308,018 miles

### HOPPER BOTTOM TRAILERS

**2001 Timpte Super Hopper tandem axle hopper bottom**, 40'x96"x72", ag hoppers, spring susp., electric roll tarp, 11R24.5 tires on steel rims, New roll tarp motor

**1990 Timpte Super Hopper tandem axle hopper bottom**, 42'x96"x72", std. hoppers, 2 spd. hoppers, electric roll tarp, 285/75R24.5 tires on steel rims

### SPRAYER TRAILERS

**2002 Great Dane 8001-1AB-36T2 tandem axle reefer trailer**, 36', air susp., aluminum floor, roll-up door, (2) curb side doors, rear step, (3) 1,650 gal. tanks, 65 gal. & (2) 40 gal. Tru Kleen mix cones, Honda electric start 2" cast iron pump, 2" plumbing,

Honda electric start 2" transfer pump for clean water into mix cones, 295/75R22.5 tires on steel rims  
**1990 Shop-built tandem axle step deck trailer**, 33'x102", 14' lower deck, 7" rear deck, 12" neck, wood deck, walking beam susp., (2) 1,000 gal. SS tanks & (1) 800 gal. SS tank on stands, 3" plumbing, 2" Honda transfer pump, F&S 2" electric hose reel, F&S 40 gal. Tru Kleen mix cone, full steel fenders, 8.25-15 tires  
**1977 Fontaine DPT-3-5542 tandem axle step deck trailer**, 42'x96", 11"6" top deck, 30' deck, wood deck, spring susp., (2) 1,500 gal. poly tanks, 45 & 20 gal. mix cones, Honda gas 2" transfer pump, ConveyAll BTS405 twin compartment seed tender, 180 degree swing conveyor, roll tarp, Honda gas electric start motor, 10:00-15 tires

### OTHER TRAILERS

**2013 Stealth 719TA3 tandem axle enclosed trailer**, 19', V-nose, torsion susp., front ramp door, rear swing doors, curb door, LH gas door, aluminum frame, E-track on floor & walls, storage cabinet, smooth walls, 225/75R15 tires on aluminum rims  
**2005 Load Trail tandem axle tilt bed trailer**, 20'x81", 4' stationary front, steel deck, torsion susp., 2-5/16" ball, 245/75R16 tires on 8-hole hubs  
**1995 Wabash SA1-102CW tandem axle dry van trailer**, 48', sliding spring susp., swing doors, 11R22.5 tires on steel rims

### SCRAPER

**Toreq direct mount scraper**, 12 yd., hyd. laser mast, converted from pull-type to direct mount, hyd. push-off, universal drawbar hitch, 18.4-26 tires

### OTHER EQUIPMENT

**Wheatheart SA1061 low pro swing hopper auger**, 61'x10", low pro hopper, hyd. lift, 540 PTO

**2014 John Deere Z235 zero turn lawn tractor**, 42" deck, 20 hp. gas motor, 48 hrs., S/N1MOZ235ACEM157097  
**(5) Kenwood TK-7102H business band radios**, VHF, mics, asst. brackets & power cords

## ADAM WARD

### TRACTOR & LOADER

**1967 Farmall 856**, 2WD, open station w/canopy, diesel, 8-spd., 2 hyd., 3 pt., 540/1000 PTO, Farmhand F235 hyd. quick tach loader, 7" bucket w/3-tine grapple, 111.00-16 front tires, 6.9-38 rear tires, 7,403 hrs., includes extra 7-1/2" & 8" buckets, S/N9105

### TILLAGE EQUIPMENT

**IHC 45 vibrashank field cultivator**, 14', 6" space, 4-1/2" sweeps, single wheels, hyd. cylinder  
**IHC 475 tandem disc**, 18', 7-1/2" space, 18" blades, spring assist folding wings, dual carrier wheels, hyd. cylinder  
**IHC 710 semi-mount plow**, 7x16", coulter, 2 pt. hitch

### HAY EQUIPMENT

**Emmett Hennig 3 pt. bale carrier** Farmhand 3-prong bale spear, fits Farmhand loader

### OTHER EQUIPMENT

**Alloway 5260 snowblower**, 3 pt., 8', double auger, hyd. spout rotation, 540 PTO, S/NS260960510  
**Case-IH 3 pt. quick hitch**, Cat 3 adj.



**ALLEN WARD ESTATE | BRANDON, 701.640.8204,**  
**Pam Lindemann, PR**  
**ADAM WARD, 701.640.2326**  
 or Tadd at Steffes Group, 701.237.9173 or 701.729.3644



701.237.9173 | SteffesGroup.com

Steffes Group, Inc., 2000 Main Avenue East, West Fargo, ND 58078



TERMS: All items sold as is where is. Payment of cash or check must be made sale day before removal of items. Statements made auction day take precedence over all advertising. \$35 documentation fee applies to all titled vehicles. Titles will be mailed. Canadian buyers need a bank letter of credit to facilitate border transfer. Scott Steffes ND81, Brad Olslad ND319, Max Steffes ND999, Justin Ruth ND2019